

# BLÜCHER® DRAIN MARINE



Drain for cabins

## Drain with water trap for cabins - 68 mm built-in height

- Low-height drain for applications where installation height is limited
- For welding into steel floor/deck
- Low-height 2-part water trap included

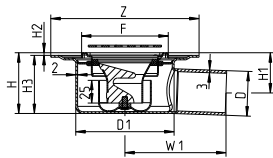


KEEPING UP THE FLOW

## Drain with water trap for cabins - 68 mm built-in height

- Drain in 2 mm stainless steel for welding into steel floor/deck
- OD 50 mm horizontal outlet in 3 mm material for safe welding to pipe system or connection to standard BLÜCHER® EuroPipe push-fit pipe system
- 2-part water trap with 25,5 mm water seal height included
- Easy cleaning and hardly any maintenance

### MARINE DRAIN TYPE 491 WITH REMOVABLE WATER TRAP



Type no.	EAN no.	D	D1	F	Z	H	H1	H2	H3	W1
491.200.050 VS	5705499131857	50	110	97x97	Ø166	68-78	45-55	3-13	65	113

### Drain

Low-model drain in 2 mm stainless steel for welding into steel floor/deck, with OD 50 mm horizontal outlet in 3 mm stainless steel for welding onto pipe system or connection to standard BLÜCHER® push-fit pipe system. This ensures a water-tight connection between drain and floor and between outlet pipe and pipework system. Adjustable upper part with frame 97x97 mm for tiled or epoxy flooring. Grating included.

### Water trap

Low-model 2-part water trap in stainless steel, easily removed and separated in two parts for cleaning (rinse under the tap). Water seal height 25,5 mm (please note that this is not in accordance with EN 1253).

The drain can be used with water trap when installed in a cabin and connected directly to the sewage system. When connected to e.g. a group penetration with water trap or when installed on a balcony from which the water is led directly over board, the drain can be installed without water trap.

### Material

Stainless steel - AISI 316L

