

BLÜCHER® DRAIN MARINE

NEW



Marine drains and penetrations

Stainless steel drainage for aluminium structures

- Direct welding of stainless steel into aluminium
- One drainage solution for all vessels
- Available from stock

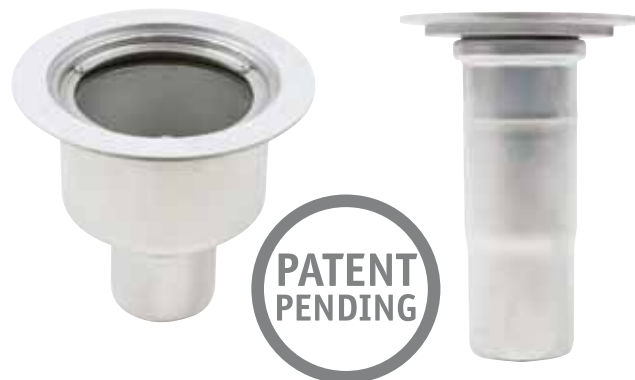


KEEPING UP THE FLOW

BLÜCHER® DRAIN MARINE

Stainless steel drains and penetrations for aluminium

- Welding directly into aluminium
- Complete standard system
- One system - one supplier
- For all vessels
- Patent pending



Description

Drains and penetrations with a flange combined of pressed aluminium and stainless steel. This combination makes it possible to weld stainless steel directly in aluminium decks and other structures onboard ships.

Applications

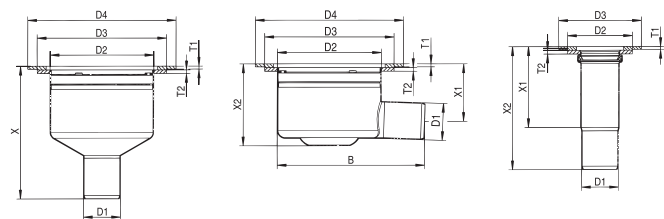
The products are suitable in particular for cruise liners, luxury yachts, ferries and other maritime vessels, where high strength combined with low weight are essential.

Material

Flange: Stainless steel and aluminium
Others: Stainless steel - AISI 316L

Test

The product range has been tested at the Danish Force Institute. Please see technical sheet No. 02.2006.



Drain	D1	D2	D3	D4	X	T1	T2
480.200.050 S	50	140	175	200	179	4	5
480.200.075 S	75	140	175	200	177	4	5
480.200.110 S	110	140	175	200	151	4	5

Drain	D1	D2	D3	D4	X1	X2	B	T1	T2
485.200.050 S	50	140	175	200	111	77	199	4	5
485.200.075 S	75	140	175	200	111	76	204	4	5

Pipe penetration	D1	D2	D3	X1	X2	T1	T2
878.105.050 S	50	88	112	109	166	4	5
878.115.075 S	75	113	137	120	182	4	5
878.125.110 S	110	148	172	128	207	4	5

All measurements in mm

Installation

The products can be installed flush with deck surface or either below or above deck surface, by means of TIC or MIG/MAC welding.

IMPORTANT: All surfaces between the aluminium and stainless steel must be coated after welding. Please see installation instructions.

All products are available from stock.



KEEPING UP THE FLOW